

Appendix 3

Key Outcomes and Priorities

In the Healthy Child Programme (HCP) it is stated that the implementation should lead to:

- strong parent–child attachment and positive parenting, resulting in better social and emotional wellbeing among children;
- care that helps to keep children healthy and safe;
- healthy eating and increased activity, leading to a reduction in obesity;
- prevention of some serious and communicable diseases;
- increased rates of initiation and continuation of breastfeeding;
- readiness for school and improved learning;
- early recognition of growth disorders and risk factors for obesity;
- early detection of – and action to address – developmental delay, abnormalities and ill health, and concerns about safety;
- identification of factors that could influence health and wellbeing in families
- improved short- and long-term outcomes for children who are at risk of social exclusion.

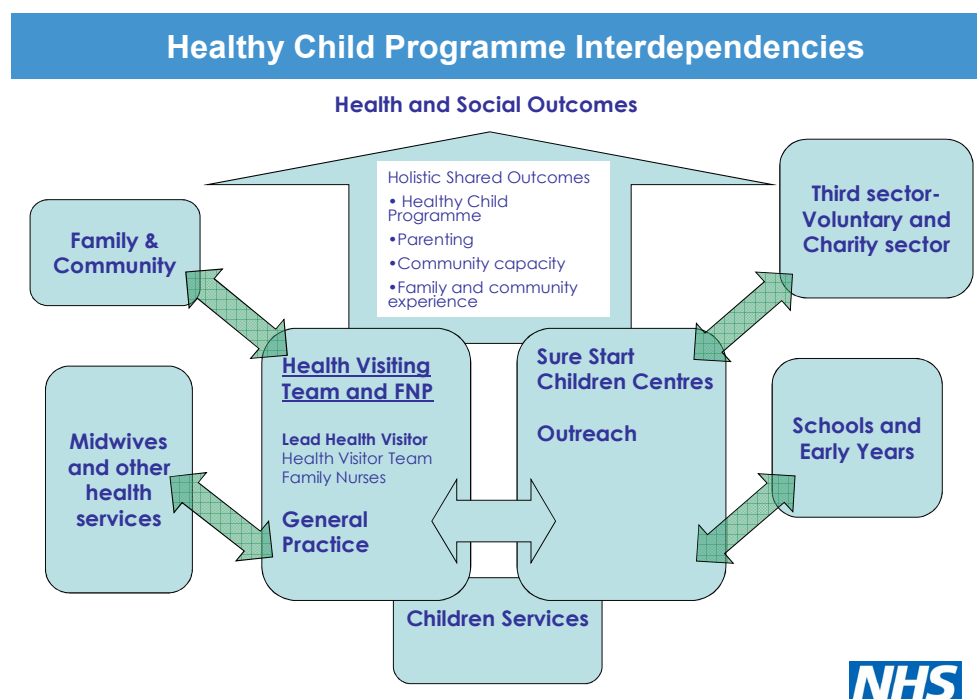


Fig 1: Diagram illustrating the interdependencies related to the HCP